

## CORRECTION

*Cereal Chemistry*, Vol. 49, No. 4

(July-August, 1972)

Page 391, by J. E. Kruger.

Page 392, Figure 1. One half of the figure has been omitted. Please substitute the following photographs (top and bottom), which include zymograms 1 through 12.

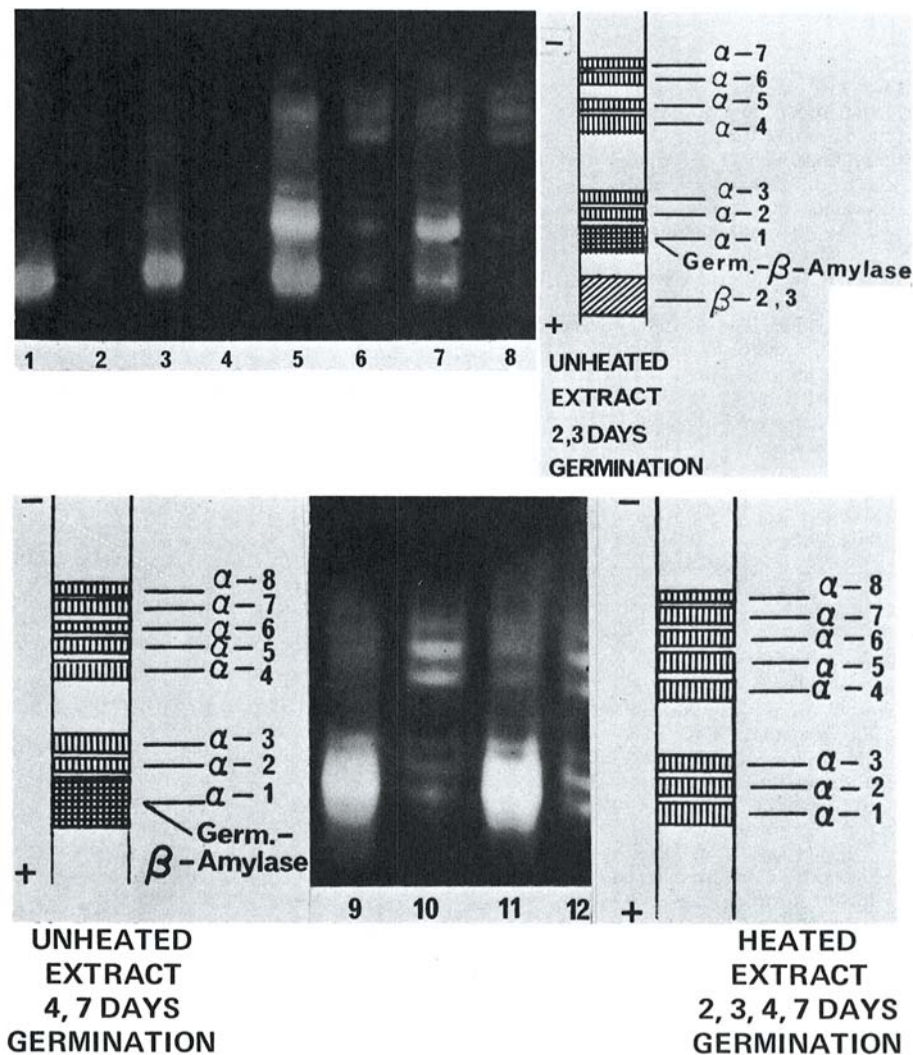


Fig. 1. Zymograms on starch gel indicating changes in amylases from Manitou wheat during germination. 1, 3, 5, 7, 9, 11: Amylases present in unheated extracts at 0, 1, 2, 3, 4, and 7 days' germination. 2, 4, 6, 8, 10, 12: Amylases present in heat-treated extracts at 0, 1, 2, 3, 4, and 7 days' germination.